

CAPWATCH DOWNLOAD

12/29/08

Presently National provides two ways to get CAPWATCH data that can be used in conjunction with the Encampment Management Program.

[CAPWATCH Text Files Download](#)
[CAPWATCH DownLoad](#)

Existing Download

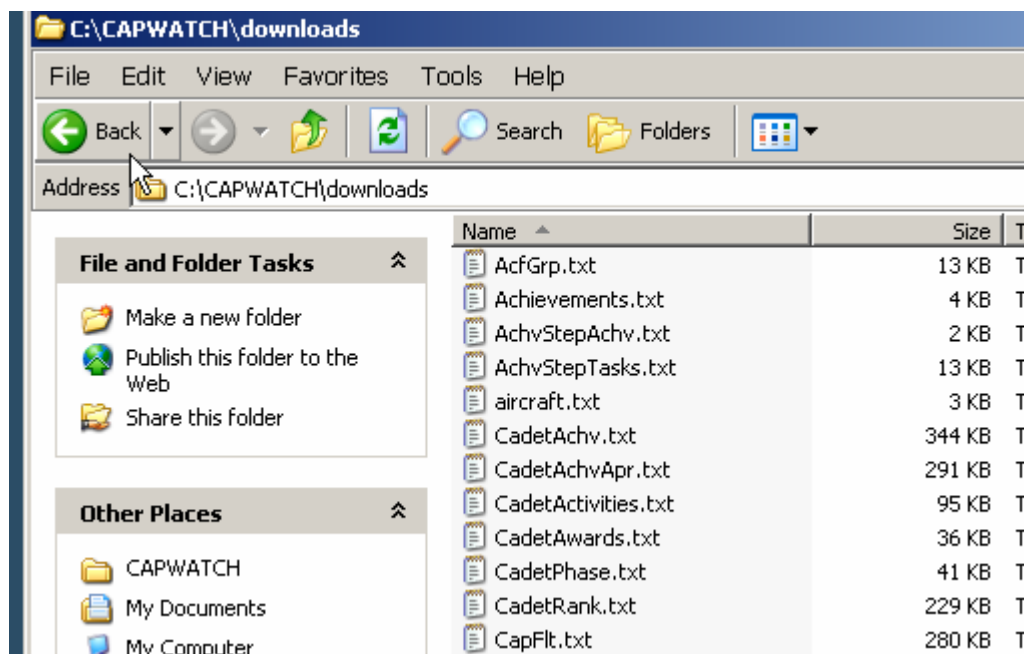
The **CAPWATCH Download** provides an ACCESS database that can simply be extracted and stored in the directory C:\CAPWATCH. Each time you download, you will REPLACE the old database. As long as national provides this option, you can continue to use this method with the Encampment management Program regardless of which version of the software you are using.

Future Download

At some point in 2009, it is expected that the only option available will be **CAPWATCH Text Files Download**. This download is a zipped file of text files that will need to be 'loaded' into an Access database in order to function properly.

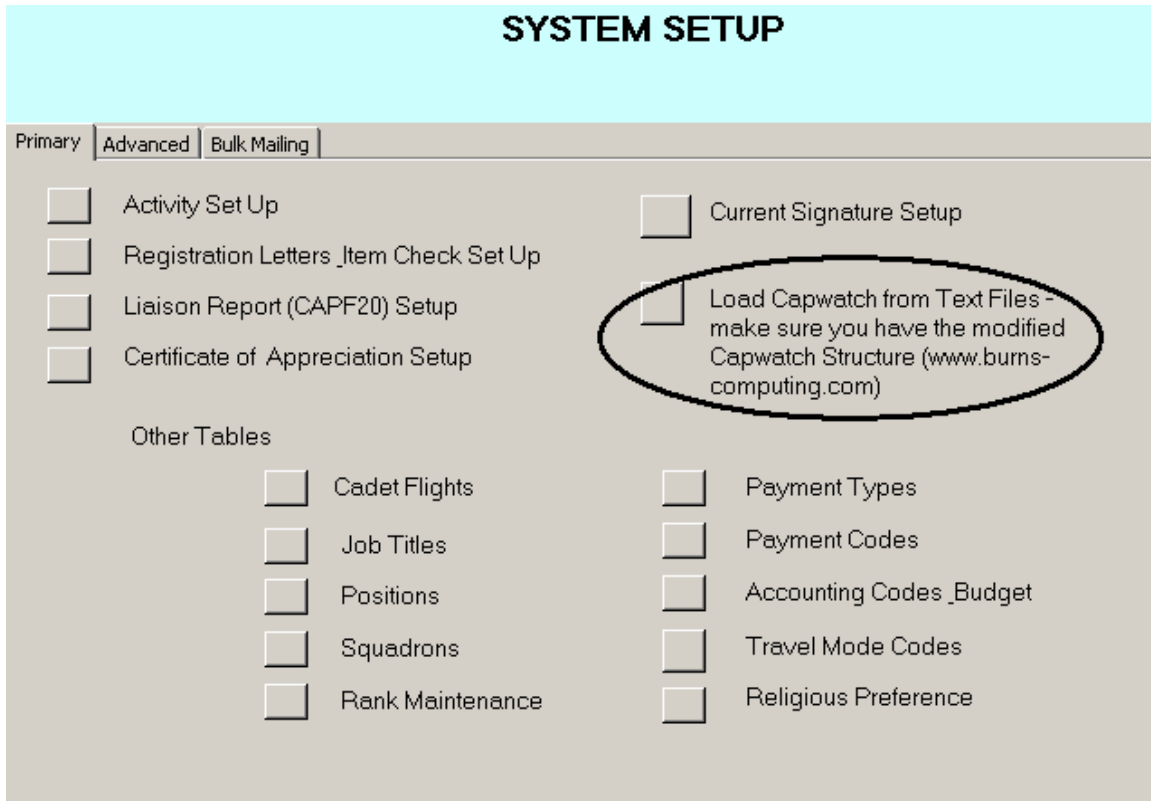
You MUST download the Empty CAPWATCH database on the **downloads** page of this website in order to use the procedure provided in the Encampment management Program to load these text files. (There are additional fields in the text files that do not exist in the present CAPWATCH database downloaded from National. If you try to run the Load Program into this database, you will get errors.) This empty CAPWATCH.mdb database must be located in C:\CAPWATCH.

Create a folder in the C:\CAPWATCH directory named **downloads**. Extract the text files into this directory.



Procedure for Version 7.0

If you are using the current version of the program, the procedure to Load the files in on the System Set Up Menu.



SYSTEM SETUP

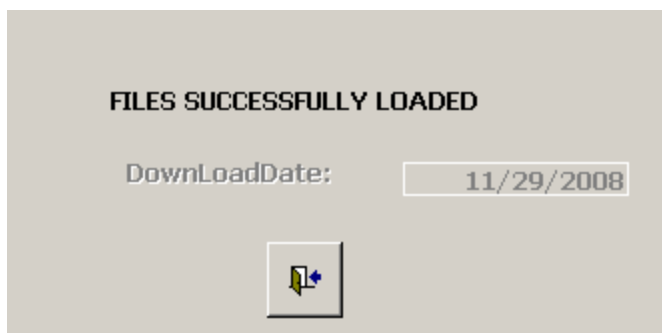
Primary | **Advanced** | Bulk Mailing

<input type="checkbox"/> Activity Set Up	<input type="checkbox"/> Current Signature Setup
<input type="checkbox"/> Registration Letters_Item Check Set Up	<input type="checkbox"/> Load Capwatch from Text Files - make sure you have the modified Capwatch Structure (www.burns-computing.com)
<input type="checkbox"/> Liaison Report (CAPF20) Setup	
<input type="checkbox"/> Certificate of Appreciation Setup	

Other Tables


<input type="checkbox"/> Cadet Flights	<input type="checkbox"/> Payment Types
<input type="checkbox"/> Job Titles	<input type="checkbox"/> Payment Codes
<input type="checkbox"/> Positions	<input type="checkbox"/> Accounting Codes_Budget
<input type="checkbox"/> Squadrons	<input type="checkbox"/> Travel Mode Codes
<input type="checkbox"/> Rank Maintenance	<input type="checkbox"/> Religious Preference

This procedure will clear any data from the existing CAPWATCH.mdb and load the text files in the C:\CAPWATCH\downloads directory into the CAPWATCH.mdb. (Only files needed for the Encampment Management Program will be loaded.) If the procedure completes, you will see the following screen:



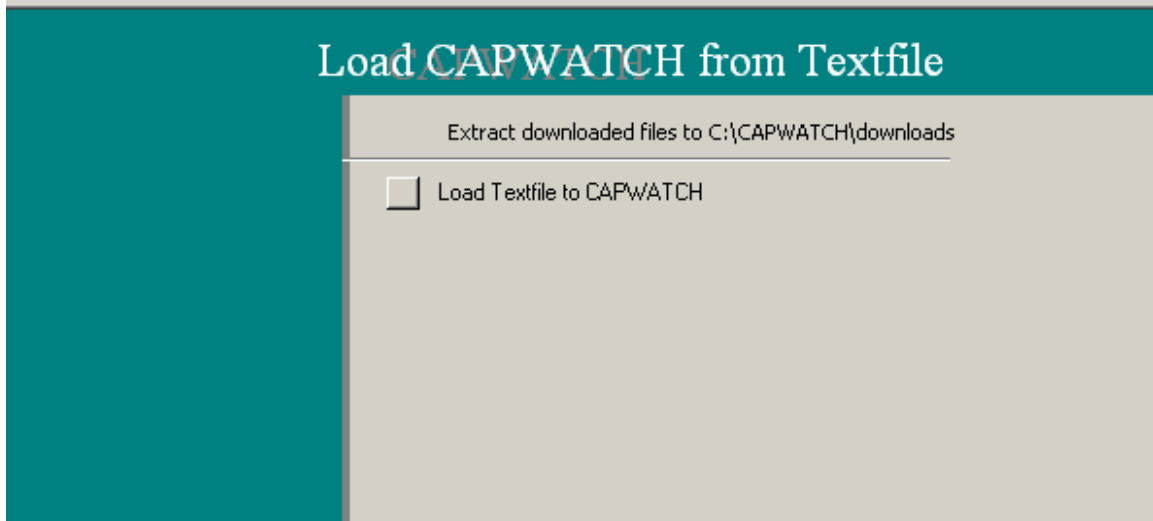
FILES SUCCESSFULLY LOADED

DownLoadDate: 11/29/2008



Procedure for Versions earlier than 7.0

If you are already using a version of the Encampment Management Program earlier than Version 7.0 and do not wish to upgrade to the current release, you can open the CAPWATCH.MDB database. You should see an opening menu which has the option to load the files.



ALL textfiles (not just those needed for the Encampment Management Program) will be loaded into the CAPWATCH.mdb database. You will see the verification screen below:

